

eFONA⁽¹⁾ in CICO situation

According to the latest DAS⁽²⁾ guidelines

Compact and lightweight set



ScapelCric[®]

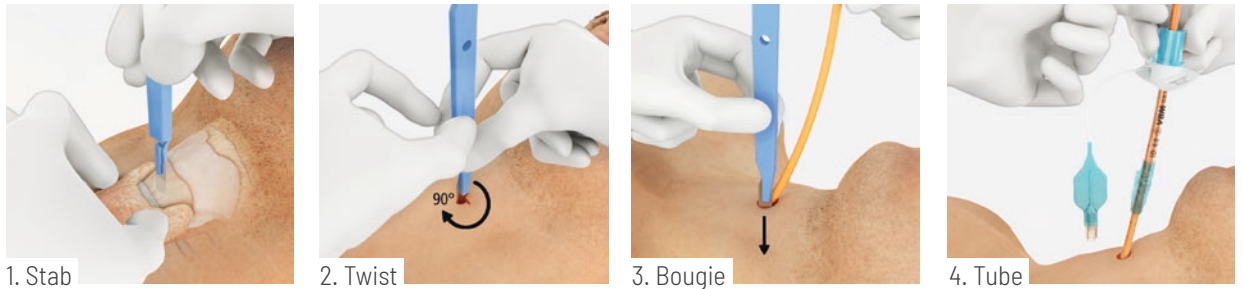
Set for surgical cricothyrotomy according to the scalpel technique

/ ScalpelCric®

ScalpelCric® is a surgical set for cricothyrotomy according to the scalpel technique. The set has been developed to match the latest recommendations from the DAS (Difficult Airway Society) guidelines.

Based on the simple description of "**stab, twist, bougie, tube**", the ScalpelCric® is meant to facilitate the execution of eFONA (emergency Front Of Neck Access) in a CICO situation (Cannot Intubate – Cannot Oxygenate). The set is packed in a specific sterile pouch with each component organised in the order of use. This can be important at the critical time of the procedure.

Use



Features

Scalpel

- Size 10 scalpel is the ideal size to match the O.D. of the tube

Bougie

- Low friction surface for easy railroading of the tube
- Angled and rounded tip
- Centimetre markings to control insertion depth

6.0mm I.D. Tube

- Cuff for protection against aspiration
- Anatomical flange
- Atraumatic, rounded tube tip
- Smooth transition between bougie and tube

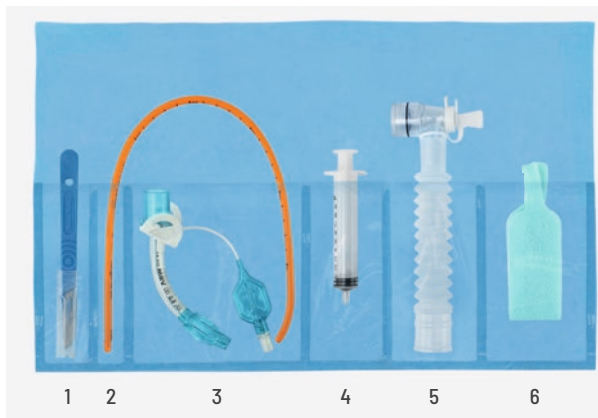
Extension Tubing

- With suction capability ≤ 16 Fr
- For strain relief



Necktape

- Safe fixation of the tube



Content

- 1 Scalpel #10
- 2 15 Fr Bougie, 40 cm
- 3 6.0mm I.D. tube with cuff
- 4 Syringe 10 ml
- 5 Extension tubing
- 6 Necktape

Packaging

- Robust packaging and compact pack size 26,0 (L) x 14,5 (W) x 3,5 (H) cm to fit emergency bags, backpacks, crash carts, etc.
- Opening arrows for easy opening
- Sterile pouch is water-resistant

Order information

ScalpelCric® / For single use, sterile

REF QTY / Box

30-08-447-1 1

Additional information



Application video



Flyer cricothyrotomy



Annotated bibliography

This product is manufactured without the use of natural rubber latex, unless otherwise specified.
This product does not contain phthalates which require labelling according to CLP Regulation (EC) 1272/2008.

(1) emergency Front Of Neck Access
(2) Difficult Airway Society